













Bronze Plaques Will Honor Miss Bennet, Howell Cheney

Bronze plaques will be placed in the school system...

At the request of William Buckley, Jr. and the board of education...

One will mark the remaining 10 days of the former Barnard Junior High for Miss Elizabeth O. Bennet...

She was a former principal of the old Ninth District School, Nathan Hale, South and Highland Park Schools...

WANTED! Clean, Late Model USED CARS TOP PRICES PAID

Carter CHEVROLET CO., INC. 1229 Main St., Manchester

'I LOST A POUND A DAY Using the Simple, Easy, Economical COMET RICE DIET

From some people who have tried the Comet Rice Diet...



Pupils Watch G&S Perform

Fourth, fifth and sixth graders in the public school system...

Working performers being made up are students Doreen Hanna and Terry Grant...

Speakers to Talk On Mental Health... Community Services, OMR, State Department of Health...

LYNN Poultry Farms. Choice Fresh Native Poultry... Direct From Farm to You!

Bowling Alley Kickoff Of \$3 Million Complex

The construction of a bowling alley by early fall is the first step proposed in a \$3 million project...

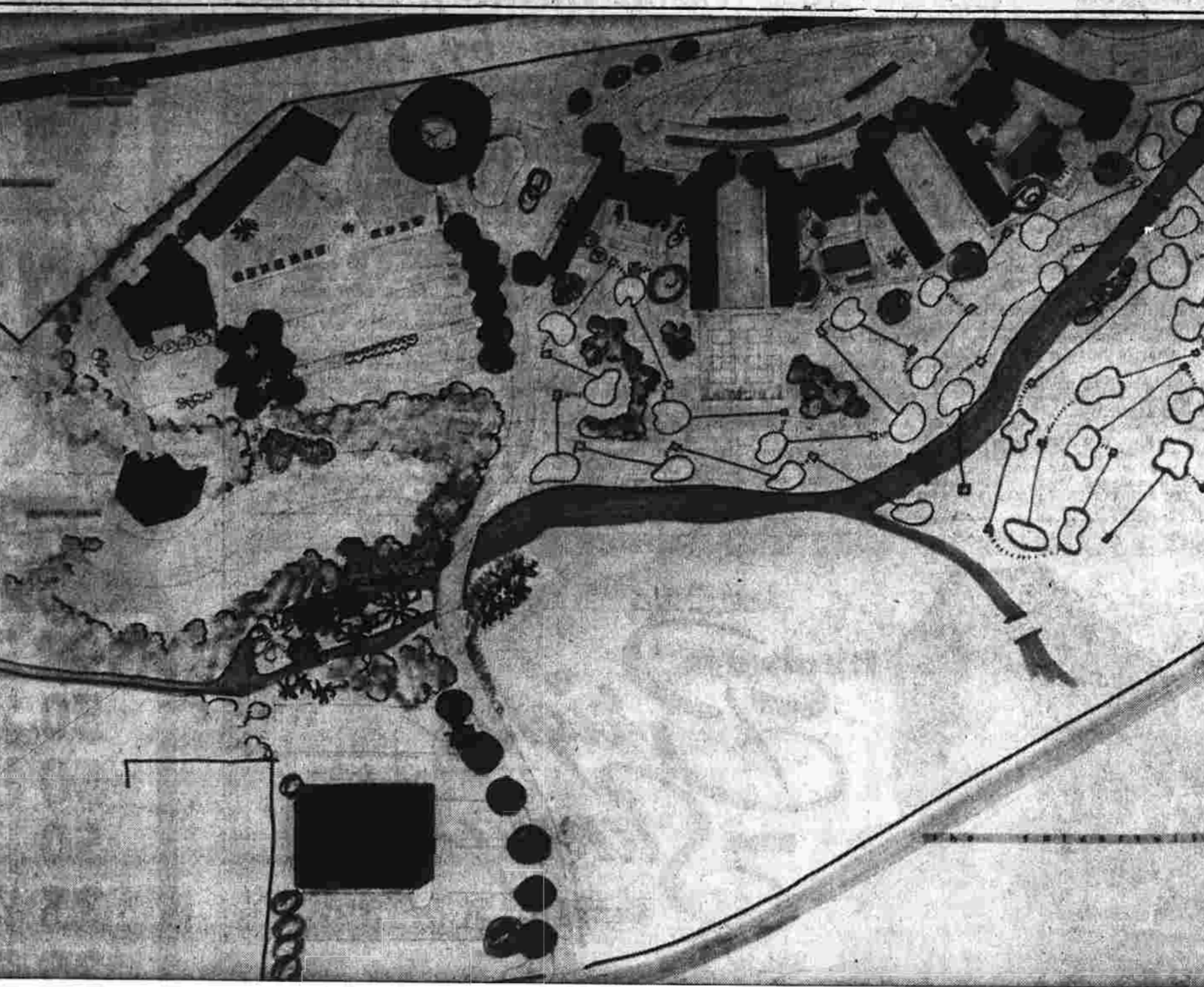
Pulpit Exchange Set for Sunday... The Rev. Ronald C. O'Reilly, pastor of First Congregational Church...

After Easter Fete Set at St. John's... A traditional After Easter supper called 'Easterconk'...

Mrs. Malkenson PTSO President... Mrs. William Malkenson, 101 Olcott Dr. last night was elected...

Astronomer Finds Far-Away Planet... across the sky will be a uniform pattern...

Fat Overweight... He said an extensive series of photographic plates enabled him...



The square building at the bottom of the plan is the bowling alley, the building that will be constructed first...

Pupil Art Work In Store Window... The annual exhibit of public school art will continue through April 30...

Everybody saw these headlines this year: FLORIDA'S WINTER ONE OF COLDEST IN RECENT YEARS...

Pacific Northwest Has Warmest February In Past Sixty Years... SEATTLE, Wash. - February's weather in Washington...

The Pacific Northwest had another pleasant winter... Almost every edition of newspapers this past winter brought reports of record cold...

EL PASO NATURAL GAS COMPANY... EL PASO NATURAL GAS COMPANY PROVIDES NATURAL GAS TO DISTRIBUTION COMPANIES AND INDUSTRIAL CUSTOMERS...

ALLSTATE Safe-T-Treads Tires Retread... Sidewall to Sidewall

All 14-inch Sizes at ONE LOW PRICE... GUARANTEED 15 MONTHS Tubeless Blackwalls 9.95...

WOOD Locker Plant and Meat Market... FRESH MEATS - RETAIL DEPARTMENT... COLUMBIA SMALL LEAN U.S.D.A. CHOICE...

Five Teachers Join System

The board of education last night appointed five new teachers to the school system...

The new reading coordinator, who will work mostly on the primary level is Miss Diane J. Smith of Berlin, Conn...

They are Leslie LaFond of Orono, Maine, who will coordinate the University of Maine with an M.Ed. He will be placed on the sixth step of the six-step schedule...

The interim appointments are of Mrs. Roberta Watson of Manchester, to fill a vacancy in Grade 2 at Robertson School until June...

Mrs. Watson is a graduate of Central Connecticut State College with a B.S. in elementary education...

Both appointments were effective last night.

The board accepted the resignations of Mrs. Kenneth Shapiro, a teacher at Manchester High School...

Mrs. Shapiro is a graduate of Central Connecticut State College with a B.S. in elementary education...

Both appointments were effective last night.

The board accepted the resignations of Mrs. Kenneth Shapiro, a teacher at Manchester High School...

Mrs. Shapiro is a graduate of Central Connecticut State College with a B.S. in elementary education...

Both appointments were effective last night.

The board accepted the resignations of Mrs. Kenneth Shapiro, a teacher at Manchester High School...

Mrs. Shapiro is a graduate of Central Connecticut State College with a B.S. in elementary education...

Today in Washington

WASHINGTON (AP) — In the... National Academy of Sciences has called for an international effort...

Cuba Buildup Charge Renewed by Keating

(Continued from Page One) Congress or the public until there is a firm policy to support...

SPRING HOUSECLEANING VALUES! First National Stores WE GIVE GREEN STAMPS

Five Children Die In House Blaze

Scandia to Host State Vasa Units

Meeting - Refreshments will be served...

Gov. Ross Barnett cannot succeed himself.

Delate, Leslie Georgia, daughter of Leonard and Lois Gales...

Valles, Sandra Ellen, daughter of John Thomas and Eileen...

Lord, Marjory Sue, daughter of Robert and Lillian Boothroyd...

Leonard Warren Theodore, son of Walter Joseph and Louise...

Stanley, Beth Anne, daughter of Irving and Lynn Frederick...

The Baby Has Been Named... Image of a baby

Whatever the weather outside... Inside... BONELESS CHUCK ROAST 59c... COFFEE 59c... BREADS 29c...

375 Bonus Stamps ON HOUSE CLEANING ITEMS BELOW... 100 EXTRA STAMPS With Each Large BELLVIEW BROOM...

Lestoil PINE SCENT 28-OZ BTL 69c... Fab Detergent LARGE PKG 34c... Ajax ALL-PURPOSE LIQUID CLEANER...

Salada Tea Bags 16 SALT 1c... JELL-O ALL FRUIT GELATINS 4 3-OZ PKGS 39c...

Double \$2. Green Stamps WEDNESDAY IN HARTFORD COUNTY

WOW! WHAT WONDERFUL SPRING SAVINGS... LOW DISCOUNT PRICES GREEN STAMPS

So Tender - So Flavorful PORK ROAST FULL 7-RIB CUT LB 27c... CAULIFLOWER 29c... CARROTS 25c...

CHECK THESE LOW DISCOUNT PRICES! Hormel SPAM 18.0Z 43c... Kraft PINE CREAM CHEESE 3.0Z 25c...

Bargain Buys at Everyday Low Prices! Fels Naptha Hand Soap 2 23c... Gold Medal Flour 5 57c...

Bonus Stamps! 25 EXTRA \$2 STAMPS WITH ITEMS LISTED BELOW... Ice Cream Dolly Madison... Keebler Pecan Sandies...



Andover School Board Supported in Budget Asked

A public hearing on the finance board's proposed budget for 1968-69, held at the Town Hall last night, was attended by approximately 80 people.

Interest centered on the board of education budget and specifically on the social worker and the principal's salary. The finance board had deleted the social worker from the budget, and reduced the recommended principal's salary increase of \$1,000 by \$300.

When the question of expenditure for a town office building arose, Scanlan, as chairman of the town office building committee, said that a town meeting would be held next Wednesday night, at which the building committee would give its full report.

Mrs. Hazel Floyd, who is in charge of records and books, has announced that space for these items is available at the school, and can be dropped off there at any time.

Mrs. Edmund Hauschild and Mrs. Edward Jurrowski are in charge of plants and seeds, which will be sold from the school. Mrs. Doris Chamberlain and members of the teaching staff will be in charge of the food booth, which will offer cakes, pies, rolls, cookies and breads.

The handicraft booth, with Mrs. Steve Urbin in charge, will offer items such as beanie hats, doll clothes, stuffed animals, aprons and handkerchiefs.

Both Republican and Democratic candidates for office in the May town election will attend an open meeting Tuesday at 8 p.m. in the elementary school.

The meeting is being held by the Andover Republican Women's Club. All interested townpeople are invited to come and meet the candidates.

Mark 65th Year. Mr. and Mrs. John Bogardus will celebrate their 65th wedding anniversary Sunday. They are currently at 1815 Third St. in Holy Hill, Pa., but expect to return to Andover around the first of May.



2400 - EXTRA PLAID STAMPS TO GO!

- THIS WEEK'S BONUS ITEMS... 100 Extra Stamps with Mailer Coupon & 5 lb case AAP... 100 Extra Stamps with Mailer Coupon & 5 lb case AAP... 50 Anacin Tablets... 50 Starburst Tuna... 100 Sliced Bacon... 100 Lawn Builder... 100 Syrup... 50 Frozen Cut Corn

Ground BEEF

- SUPER-RIGHT QUALITY 39¢ LB
ARMOUR'S Sausage Meat LB 29¢
LIVERWURST OR Bologna IN PIECE LB 39¢
Fresh Steak Cod LB 29¢
Fried Scallops LB 69¢

- BONELESS CHUCK POT ROAST LB 49¢
RIB ROAST SHORT CUT 3rd TO 6th RIB LB 59¢
CORNED BEEF FRONT CUT LB 59¢
Pot Roast FRESH BRISKET (Straight Cut lb 89¢) LB 59¢
Shoulder Roast Boneless Oven Beef LB 79¢
Chuck Steak NUTRITIOUS FLAVORFUL LB 49¢
GROUND CHUCK LB 59¢ STEW BEEF LB 59¢



- MILD, MELLOW COFFEE REG. 1.59 SAVE 20¢ Eight O'Clock 3 LB BAG 1.39
Rich, Full-Bodied Coffee Reg. 1.71 Save 22¢ Red Circle 3 LB BAG 1.49
VIGOROUS AND WINEY REG. 1.77 SAVE 18¢ Bokar Coffee 3 LB BAG 1.59



- ANN PAGE PURE STRAWBERRY PRESERVES 1 LB JAR 39¢ 2 LB JAR 69¢
Mayonnaise ANN PAGE QT JAR 59¢
Peanut Butter ANN PAGE 1 1/2 LB JAR 63¢

- Spring Planting Needs... Shrubs FLOWERING HONEYSUCKLE FORSYTHIA 2 YEARS OLD JAPANES 15 TO 15' UPRIGHT OR SPREADING 1.19 2.89
Canadian Hemlock 15-18" EACH 1.98
Globe Arborvitae 15-18" EACH 2.89
Oxford Park Grass Seed 50 LB 1.59
Homestead Fertilizer 50 LB 1.69
Lawn Builder 20-10-5 BAG 2.99

- KRAFT'S MINIATURE Marshmallows 1 LB PKG 29¢

- JANE PARKER BUTTERMILK BREAD 2 1 LB 6 OZ LOAVES 55¢

- ANN PAGE Italian Dressing 8 OZ BOT 29¢
AP'S ALL PURPOSE OIL dexola 1 OZ 1 PT 73¢ BOT 35¢
Dixie Cup Refills Pkg of 35 29¢
Cookies BUSHNET CHOCOLATE DIPP 74¢ Pkg 29¢
Educator Saltines 1 1/4 Pkg 31¢

- KING SIZE Colgate Tooth Paste 4 OZ 69¢ TUBE
PURE 'N' SOFTS Cat Food 2 15 OZ CANS 29¢

- 25 Mocha Iced Layer Cake

ASPARAGUS 2 39¢

- CORN YELLOW 5 FOR 43¢
BANANAS 2 29¢

- SULTANA JELLY APPLE-GRAPE 3 1 LB 2 OZ JARS 1.00
SALAD DRESSING ANN PAGE QUART 49¢
ANN PAGE KETCHUP 2 14 OZ BOTS 37¢
ELBERTA PEACHES Archway 4 1 lb 13 oz cans 99¢
FRESH EGGS SUNNYBROOK GRADE A LARGE WHITE DOZ 47¢

CANNED CHICKEN R&R 2 6 OZ CANS 69¢

- Angel Food RING - Jane Parker SAVE 20¢ 8-1/2 x 1 1/8 OZ 20¢
Cherry Pie Jane Parker Large SAVE 10¢ 8 inch 1 1/2 lb 8 OZ Size 10¢
Cinnamon Rolls Jane Parker SAVE 4¢ 8 1/2" RING 4¢
Creme Cookies JANE PARKER VALUE 39¢

Table with 7 columns: Baby Foods, My-T-Fine Instant Puddings, Crisco Oil, Lestoil Pine Scent, Spry Shortening, Heinz Chili Sauce, Heinz Hot Dog & Hamburger Relish, Rapid Shave, Armstrong Floor Polish, Excedrin, GOLD MEDAL Flour, Hi-C Fruit Drinks, Green Giant Niblets, Green Giant Cream Style Corn.

CLIP AND REDEEM COUPON 100 EXTRA S&H STAMPS with purchase of \$5 or more. MOTT'S logo.



THERE'S MORE TO MEAT than meets the eye!

Let us take the gamble out of your meat buying. There is no need to guess about the quality of the meat you buy. You can always count on Mott's for the very best of beef—quality you can see right through the package.



REDEEM MOTT'S VALUABLE COUPONS MAILED TO YOUR HOME

CHUCK ROAST

- BONELESS CHUCK ROAST IN BONE 35¢ lb.
BONELESS CHUCK ROAST 59¢ lb.

CHUCK STEAKS MOTT'S TENDER-TRIM 55¢ lb.

Green Giant Niblets. Fresh Roasting Ear Goodness! 2 29¢. SAVE 12¢.

SHOP-RITE BRAND EVAPORATED MILK. Why Pay More? 6 69¢. SAVE 16¢.

- Mott's "Tender-Trim" OVEN SHOULDER ROAST lb. 99¢
RIB STEAK lb. 89¢
LEAN BEEF STEW lb. 79¢
HEAVY STEER BEEF LIVER lb. 49¢

Bananas Firm Golden Ripe 2 lbs. 29¢. PASCAL CELERY, CUCUMBERS, CARROTS, Frozen Food Specials!

GERI ANN WHITE BREAD 2 1-LB. LOAVES 37¢

MILK GAL 70¢ Plus Depoitt

DOLE PINEAPPLE JUICE 4 95¢

CLOROX BLEACH 34¢

DOUBLE S&H STAMPS EVERY WED. 587 MIDDLE TURNPIKE EAST—Near The Green OPEN NIGHTS—MONDAY thru SATURDAY TILL 9

LITTLE SPORTS

BY ROUSON

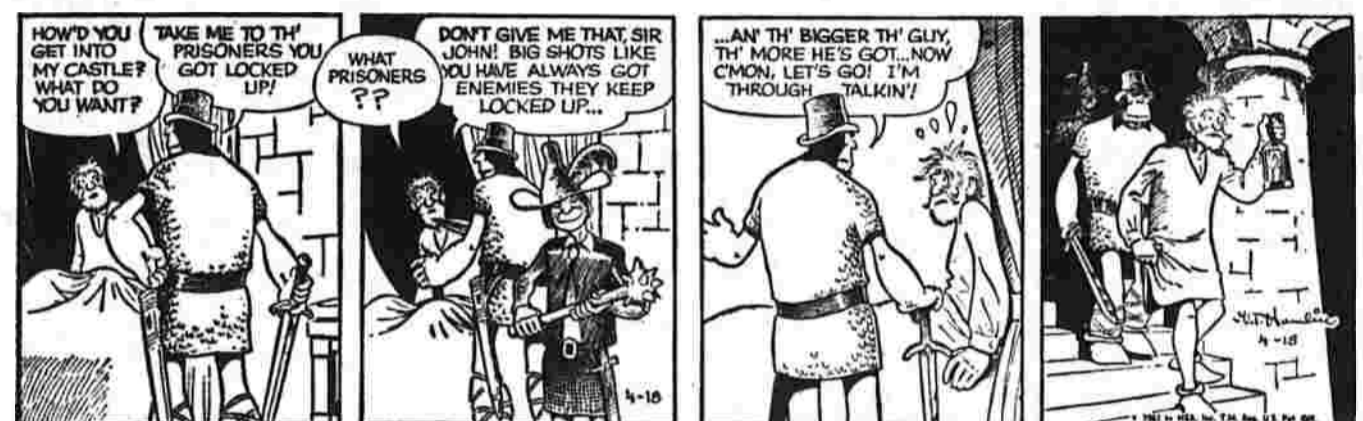


BUGGS BUNNY



ALLY OOP

BY V. T. HAMLIN



PRISCILLA'S POP

BY AL VERMEER



BONNIE

BY JOE CAMPBELL



SHORT RIBS

BY FRANK O'NEAL



BUZZ SAWYER

BY ROY CRANE



MICKEY FINN

BY LANK LEONARD



MR. ABERNATHY

BY RALSTON JONES and FRANK RIDGEWAY

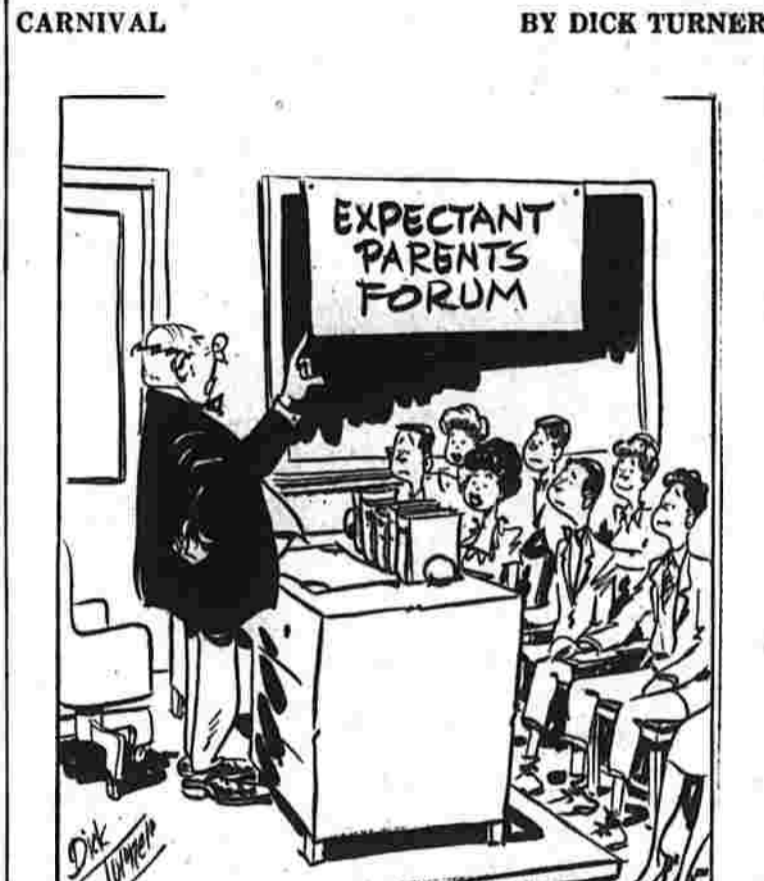


OUR BOARDING HOUSE with MAJOR HOOPLE



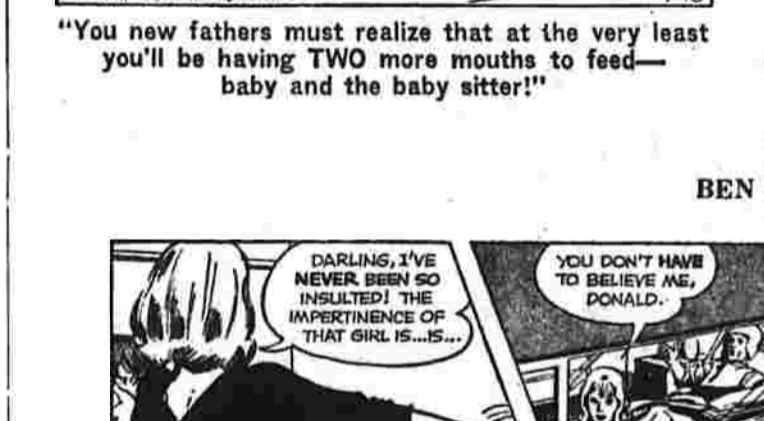
CARNIVAL

BY DICK TURNER



BEN CASEY

BY BEN CASEY



MORTY MEEKLE

BY DICK CAVALL



CAPTAIN EASY

BY LESLIE TURNER



DAVY JONES

BY LEFF and McWILLIAMS



LITTLE ME!

BY LANK LEONARD



DAILY CROSSWORD PUZZLE

Crossword puzzle grid with clues for 'Farmer in the Delf' and 'Answers to Previous Puzzle'.

OUT OUR WAY

BY J. R. WILLIAMS



Missing Platinum Found in Caracas

ROME, (AP)—The Italian authorities of a New York report today that a missing emerald worth \$200,000 was found in Caracas.

Lobster Sex Life Case for Court

NEWPORT, R.I. (AP)—"Love Among the Lobsters" or "Sex on the High Seas" might well be the title of the case scheduled to come up in District Court on Friday.

Financing, too, can be worked out on a similar basis

Financing, too, can be worked out on a similar basis, says some fishermen in the past the MRA has indicated that costs of improvements in the project area could be financed in proportion to the amount that they provide service for the area by the MRA's federal funds.

Major Francis Mahoney—What an association of merchants

Major Francis Mahoney—What an association of merchants working with assistance from the Federal Small Business Administration.

Development by a construction company seeking to transfer cash to capital gains

Development by a construction company seeking to transfer cash to capital gains, a federal mortgage program could provide support for commercial development.

No Radical Changes Planned in North End

About a dozen town officials, a small fraction of the number invited, attended an informal meeting of the Manchester Redevelopment Agency (MRA) at the Municipal Building last night to find out what land uses would be recommended for the proposed North End residential area.

Time Schedule

In answer to questions on the mechanics of the renewal program, Wuerth suggested the following time schedule: Planning would be completed by summer 1968. Then a rezoning would be done before the land could be sold to developers and construction begun.

Other questions included

John Hutchinson, of the CAC—Why should the renewal project be in the North End, thus putting the brunt of the cost for new utilities on the Eighth District?

Stetchen replied that increased population density

Stetchen replied that increased population density—which he said is inevitable as the country's population increases—would help support improvements because of the increased value of the housing, and thus the increased tax base.

Then they can make similar plans with the Eighth District

Then they can make similar plans with the Eighth District and the Manchester Water Co. to report in improved utilities as part of the other projects.

Financing, too, can be worked out on a similar basis

Financing, too, can be worked out on a similar basis, says some fishermen in the past the MRA has indicated that costs of improvements in the project area could be financed in proportion to the amount that they provide service for the area by the MRA's federal funds.

Major Francis Mahoney—What an association of merchants

Major Francis Mahoney—What an association of merchants working with assistance from the Federal Small Business Administration.

Sweet Adelines In Competition

Two Manchester members of Mountain Laurel Chapter, Sweet Adelines, Inc., will appear in regional competition with the group Saturday at Rochester, N. Y.

Sur on Hollywood

MAN FRANCISCO (AP)—Actor James Crawford, who admits to being 54, Wednesday gave his opinion of what's wrong with Hollywood. "It's gone to the horses," he said.

Pacts Affect 2 Million

WASHINGTON—Major collective-bargaining agreements affecting 2,000,000 workers and providing an average wage raise of 3.2 per cent in the United States the first half of this year.

FREE DELIVERY 9 A.M. to 9 P.M. ARTHUR DRUG

Read Herald Ads.

POPULAR GRAND CHAMPION QUALITY MEATS. You taste the difference. OUTSTANDING FOR FLAVOR AND TENDERNESS. CHOICE BONELESS CHUCK POT ROAST 79c lb. ONE PRICE AS ADVERTISED.

LOOK WHAT 10¢ WILL BUY! Cream Corn, Green Beans, Wax Beans, Sliced Beets, Potato Sticks, Book Matches. Popular 10¢ EA.

POPULAR WHITE ENRICHED BREAD 2 33c. CALO CAT or DOG FOOD SAVE 8 1-lb. Cans 95c. DOLE PINEAPPLE JUICE 4 46 oz. Cans \$1. POPULAR BARTLETT PEARS SAVE 5 23c Cans \$1. HALF GAL. DAZZLE BLEACH SAVE 8c 33c.

MORTON'S DINNERS SPECIAL OFFER 3 for \$1. \*CHICKEN \*BEEF \*TURKEY. Lipton Chicken Noodle Soup Mix 4 Pkts. 57c. Lipton Onion Soup Mix 4 Pkts. 65c.





